

## CS-200 Flash Utility V1.1.x User Manual

### 1. Notes

- 1.1 Please convert the \*.bin or \*.dat file with file compression tools, such as WinZIP or WinRAR, during file transmission by email. Since some email servers will block the \*.bin or \*.dat file attached.
- 1.2 Please use appropriate Baud Rate setting (PC) when updating file in the barcode scanner. For example, for a PC with CPU speed higher than 1.2 GHz, its baud rate can be set to 57600bps or 115200bps.
- 1.3 The following progress keeps the same for the higher version firmware or utility, unless a further user manual is provided.

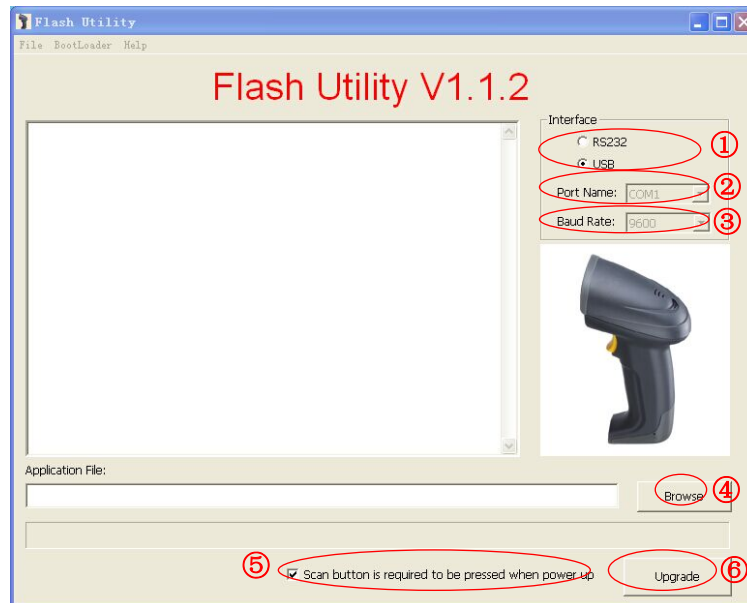
### 2. Configurations

**Table 1 Configurations**

Hardware	Computer	Windows 7/2k/XP/Me, 5M Free Space, Serial Port (9 pins)
	CS-200 scanner	
	USB cable or RS232 cable	
	5VDC power adaptor	
Software	< CS-200 Flash Utility > folder	Upgrade Tool package
	.bin or .dat file	Firmware upgrade file for CS-200 scanner

### 3. Upgrade Tool

CS-200 upgrade tool **Flash Utility** is shown in Fig.1.



**Fig.1 Flash Utility**

**Note:**

- ① Choose type of cable
- ② Choose Port
- ③ Choose Baud Rate
- ④ Choose file
- ⑤ If selected, please confirm that the **Scan** button is pressed when scanner powers on to upgrade firmware.
- ⑥ Click to upgrade firmware

---

## 4. Upgrade Method

Three methods to upgrade Firmware are shown in Table 2.

Table 2 Upgrade Methods

Upgrade Method	Type of cable	Descriptions
<a href="#">Method 1</a>	RS232	<b>SCAN</b> button must be pressed when power up.
<a href="#">Method 2</a>	USB	<b>SCAN</b> button must be pressed when power up.
<a href="#">Method 3</a>	RS232	<b>SCAN</b> button <u>can't</u> be pressed when power up.

### 4.1 Method 1

Steps of Method 1 are following:

- 1) Connect scanner, RS232 cable and 5VDC adapter as shown in Fig. 2.



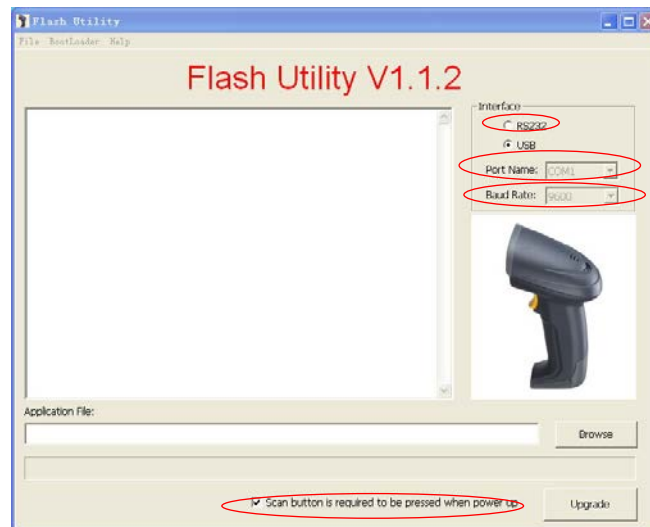
Fig. 2 RS232 cable connection

- 2) Plug in a RS232 cable into a free serial COM port (COM1~COM4) of PC.
  - 3) Press **SCAN** button and connect the 5VDC adaptor power lead with the electrical source.
- As shown in Fig. 3.

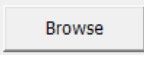


Fig. 3

- 4) Double click **Flash Utility.exe** to bring up the interface of upgrading firmware as shown in Fig.4.



**Fig. 4**

- 5) In "Port Name", choose the appropriate serial COM port.
- 6) In "Baud Rate", choose appropriate baud rate setting. If error encountered during downloading process, please change baud rate setting with lower transmission rate.
- 7) Tick "RS232", because the RS232 cable is connected.
- 8) Click , choose the file ( format of \*.bin or \*.dat ) to download.
- 9) Tick "Scan button is required to be pressed when power up" as shown in Fig. 4.
- 10) Then click "Upgrade" to start the firmware upgrading process. After successfully upgrading, "Update Successfully." will be displayed, and the scanner will restart at the meantime.

## 4.2 Method 2

Steps of Method 2 are following:

- 1) Connect scanner, USB cable as shown in Fig. 5.



Fig. 5 USB cable connection

- 2) Press **SCAN** button and plug in a USB cable into a USB port of PC.
- 3) Double click **Flash Utility.exe** to bring up the interface of upgrading firmware as shown in Fig.6.

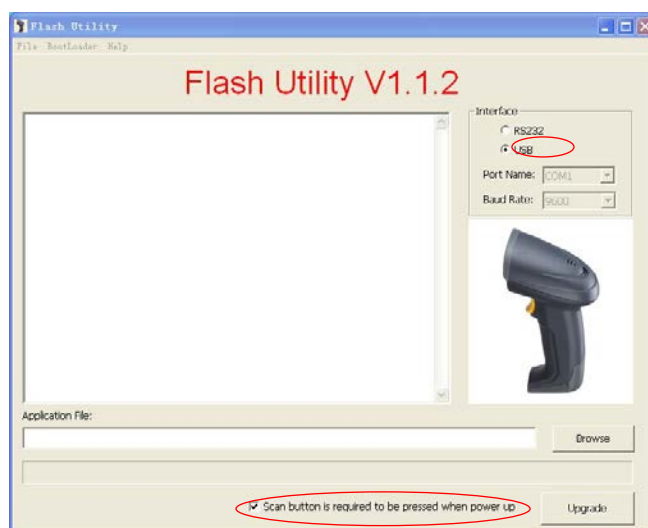
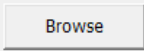


Fig. 6

- 4) Tick "USB", because the USB cable is connected.
- 5) Click  to choose the file ( format of \*.bin or \*.dat ) to download.
- 6) Tick "Scan button is required to be pressed when power up" as shown in Fig. 6.
- 7) Then click "Upgrade" to start the firmware upgrading process. After successfully upgrading, "Update Successfully." will be displayed, and the scanner will restart at the meantime.

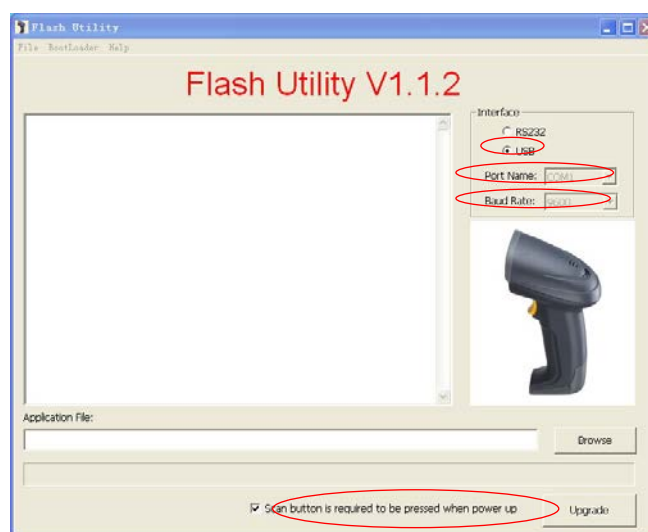
### 4.3 Method 3

Steps of Method 3 are following:

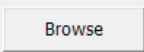
- 1) Connect scanner, RS232 cable and adapter as shown in Fig. 2.
- 2) Plug in a RS232 cable into a free serial COM port (COM1~COM4) of PC, then connect the 5VDC adaptor power lead with the electrical source.

**Note: Do not press the SCAN button when the scanner power on.**

- 3) Double click **Flash Utility.exe** to bring up the interface of upgrading firmware as shown in Fig.7.



**Fig. 7**

- 4) In "Port Name", choose the appropriate serial COM port.
- 5) In "Baud Rate", choose appropriate baud rate setting. If error encountered during downloading process, please change baud rate setting with lower transmission rate.
- 6) Tick "RS232", because the RS232 cable is connected.
- 7) Click  to choose the file( format of \*.bin or \*.dat ) to download as shown in Fig. 7.
- 10) Click "Upgrade", start the firmware upgrading process. After successfully upgrading, "Update Successfully." will be displayed, and the scanner will restart at the meantime.

**Note: Scanner's parameter will be restored as factory default, after upgrading firmware with this method!**

---

## 5. Afterwards



**%%%DEF**

### WARNING: Load default setting

If you wish to return the scanner to all the factory default settings, scan the barcode above.



**%%%VER**

### Firmware version list

Please scan the barcode above to check the current firmware version.